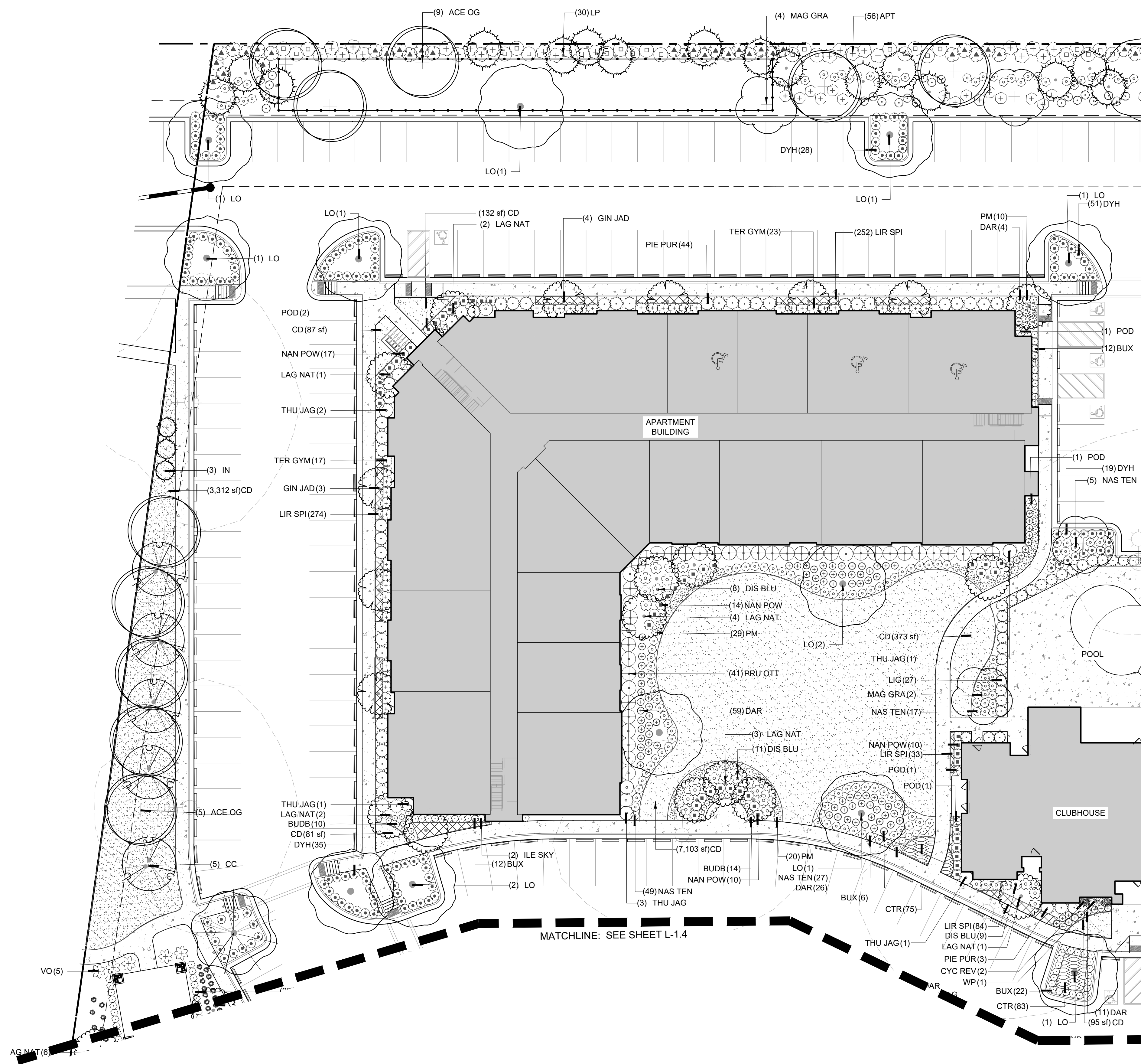




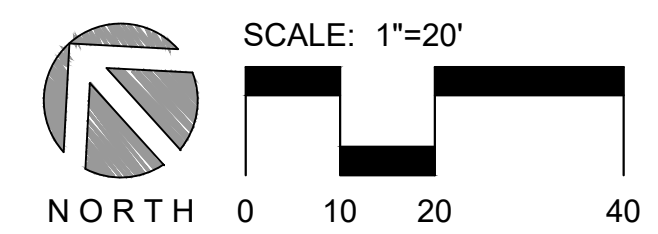
Know what's below.
Call before you dig.



MATCHLINE: SEE SHEET L-1.2

MATCHLINE: SEE SHEET L-1.4

PLANT SCHEDULE L-2.1				
TREES	CODE	QTY	BOTANICAL / COMMON NAME	SIZE
	IN	3	ILEX X NELLIE R. STEVENS' NELLIE R. STEVENS HOLLY	5' H
BUFFER TREES	CODE	QTY	BOTANICAL / COMMON NAME	SIZE
	LP	16	PINUS PALUSTRIS LONGLEAF PINE	2" CAL
UNDERSTORY TREES	CODE	QTY	BOTANICAL / COMMON NAME	SIZE
	GIN JAD	7	GINKGO BILOBA 'JADE BUTTERFLY' (DWARF) JADE BUTTERFLY GINKGO	2" CAL
	LAG NAT	13	LAGERSTROEMIA X 'NATCHEZ' CRAPE MYRTLE	7'-8" H
CANOPY TREES	CODE	QTY	BOTANICAL / COMMON NAME	SIZE
	ACE OG	10	ACER RUBRUM 'OCTOBER GLORY' OCTOBER GLORY RED MAPLE	2" CAL MIN.
	CC	5	CERCIS CANADENSIS EASTERN REDBUD	8' H
	MAG GRA	4	MAGNOLIA GRANDIFLORA SOUTHERN MAGNOLIA	2" CAL
	QS	1	QUERCUS SHUMARDII SHUMARD OAK	10' - 12' H
	LO	12	QUERCUS VIRGINIANA SOUTHERN LIVE OAK	2.5" CAL
PALM TREES	CODE	QTY	BOTANICAL / COMMON NAME	SIZE
	WP	1	TRACHYCARPUS FORTUNEI WINDMILL PALM	30 GAL
SHRUBS	CODE	QTY	BOTANICAL / COMMON NAME	CONTAINER
	ABE EDW	15	ABELIA X GRANDIFLORA 'EDWARD GOUCHER' GLOSSY ABELIA	3 GAL
	AZA	23	AZALEA 'RED RUFFLES' RED RUFFLES AZALEA	3 GAL
	APT	25	AZALEA 'L. GEORGE L. TABOR' PURPLE TABOR AZALEA	7 GAL
	AZA FOR	33	AZALEA INDICA 'FORMOSA' FORMOSA AZALEA	7 GAL
	BUDD	24	BUDDLEIA X LO & BEHOLD 'BLUE CHIP JR' DWARF BLUE CHIP BUTTERFLY BUSH	3 GAL
	BUX	65	BUXUS M. 'WINTERGREEN' WINTERGREEN BOXWOOD	7 GAL
	CYC REV	2	CYCAS REVOLUTA SAGO PALM	7 GAL
	DIS BLU	28	DISTYLUM X 'BLUE CASCADE' BLUE CASCADE DISTYLUM	3 GAL
	ILE SKY	2	ILEX CRENATA 'SKY PENCIL' SKY PENCIL JAPANESE HOLLY	7 GAL - 36" H
	DYH	146	ILEX VOMITORIA 'NANA' DWARF YAUPON	3 GAL - 12" X 12"
	LIG	27	LIGUSTRUM JAPONICUM 'EAST BAY' EAST BAY PRIVET	7 GAL
	DAR	100	LOROPETALUM C. 'DARUMA' DARUMA LOROPETALUM	3 GAL
	LOR MON	24	LOROPETALUM CHINENSE 'MONRAZ' TM RAZZLEBERRI FRINGE FLOWER	7 GAL
	MS	15	MISCANTHUS SINENSIS 'ADAGIO' ADAGIO EULALIA GRASS	12-18"
	NAN POW	51	NANDINA DOMESTICA 'FIREPOWER' FIREPOWER HEAVENLY BAMBOO	3 GAL
	PIE PUR	47	PIERIS JAPONICA 'PURITY' PURITY JAPANESE PIERIS	7 GAL - 18" H.
	POD	6	PODOCARPUS M. MAKI SHRUBBY YEW PODOCARPUS	4" HT
	PRU OTT	41	PRUNUS LAUROCERASUS 'OTTO LUYKEN' OTTO LUYKEN LAUREL	7 GAL
	TER GYM	40	TERNSTROEMIA GYMNANTHERA JAPANESE TERNSTROEMIA	7 GAL
	THU JAG	8	THUJA OCCIDENTALIS 'JANED GOLD' TM HIGHLIGHTS ARBORVITAE	15 GAL
	VO	5	VIBURNUM ODORATISSIMUM SWEET VIBURNUM	24"x24" MIN.
ORNAMENTAL GRASSES	CODE	QTY	BOTANICAL / COMMON NAME	CONTAINER
	PM	59	MUHLENBERGIA CAPILLARIS PINK MUHLY	3 GAL
	NAS TEN	140	NASSELLA TENUISSIMA TEXAS NEEDLE GRASS	1 GAL
GROUND COVERS	CODE	QTY	BOTANICAL / COMMON NAME	CONT
	CTR	158	ANNUAL COLOR (BY OWNER)	1 GAL
	LIR SPI	643	LIRIOPE SPICATA 'SILVER DRAGON' CREEPING LILY TURF	1 GAL
SOD/SEED	CODE	QTY	BOTANICAL / COMMON NAME	CONT
	CD	11,183 SF	CYNODON DACTYLON X TRANVAALENSIS 'DT-1' TM TIFTUF BERMUDAGRASS	SOD



FINAL DESIGN - RELEASED FOR CONSTRUCTION

REVISIONS:
REV. 1 UPDATED LANDSCAPING

CLIENT INFORMATION:
EVOLVE COMPANIES
2918-A MARTINSVILLE ROAD
GREENSBORO, NC 27408

PARAMOUNT ENGINEERING
122 Cinema Drive
Wilmington, North Carolina 28403
(910) 791-6707 (O) (910) 791-6760 (F)
NC License #: C-2846

LANDSCAPE PLAN
OLEANDER COMMONS
WILMINGTON
NORTH CAROLINA

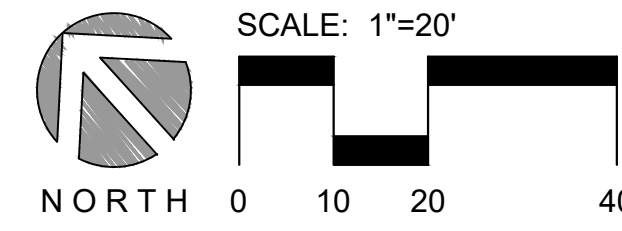
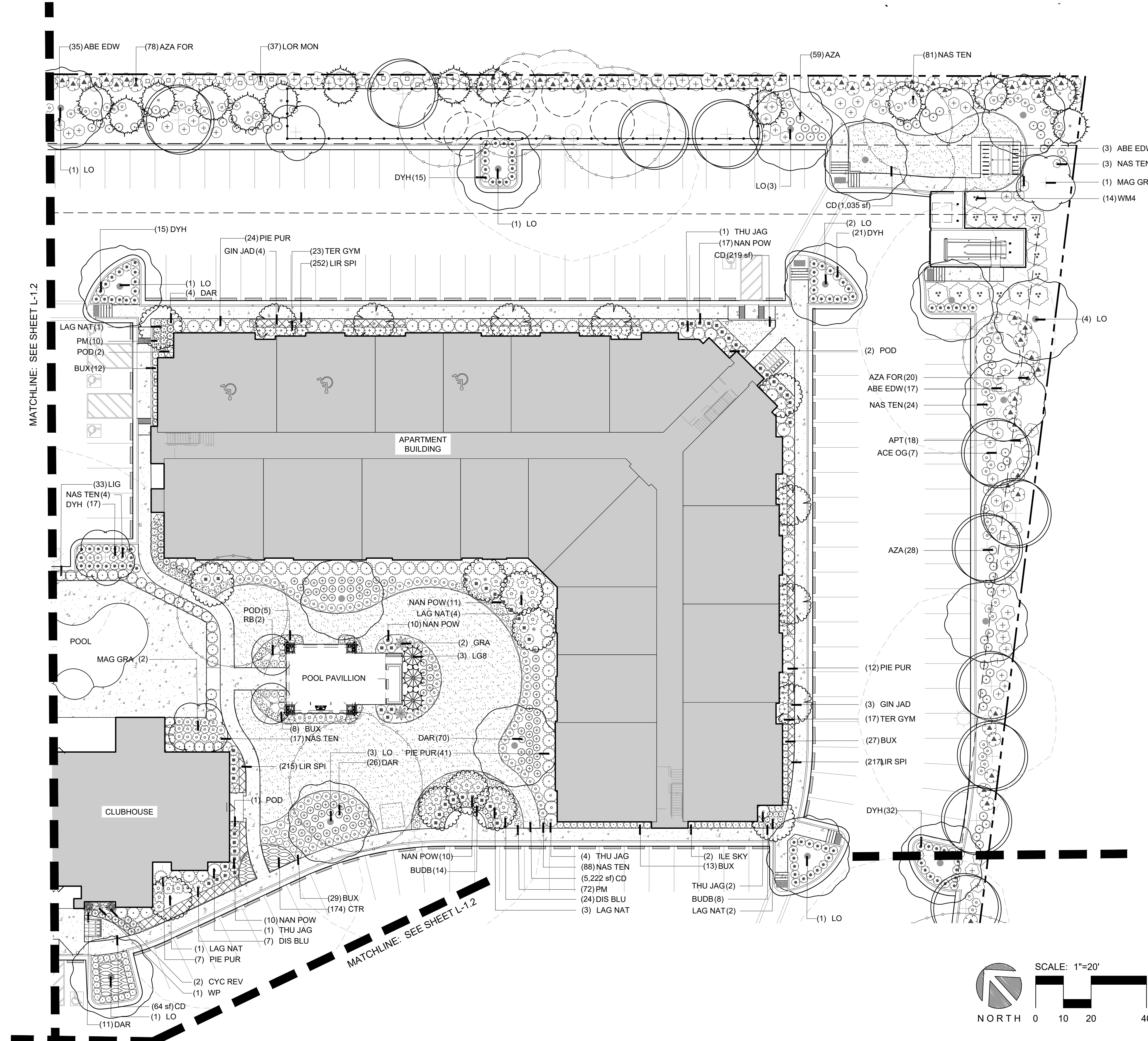
PROJECT STATUS:
CONCEPTUAL LAYOUT:
PRELIMINARY LAYOUT:
RELEASED FOR CONSTRUCTION:

DRAWING INFORMATION:
DATE: 01/12/22
SCALE: 1"=20'
DRAWN: JAMES R. CRELO
CHECKED: JAMES R. CRELO

SEAL
NORTH CAROLINA
1449
JAMES R. CRELO
PEI JOB#: 18444.PE



Know what's below.
Call before you dig.



PLANT SCHEDULE L-2.2				
BUFFER TREES	CODE	QTY	BOTANICAL / COMMON NAME	SIZE
	LP	14	PINUS PALUSTRIS LONGLEAF PINE	2" CAL
UNDERSTORY TREES	CODE	QTY	BOTANICAL / COMMON NAME	SIZE
	RB	2	CERCIS CANADENSIS 'FOREST PANSY' TM FOREST PANSY REDBUD	7'-8" H
	GIN JAD	7	GINKGO BILOBA 'JADE BUTTERFLY' (DWARF) JADE BUTTERFLY GINKGO	2" CAL
	LAG NAT	11	LAGERSTROEMIA X 'NATCHEZ' CRAPE MYRTLE	7'-8" H
CANOPY TREES	CODE	QTY	BOTANICAL / COMMON NAME	SIZE
	ACE OG	11	ACER RUBRUM 'OCTOBER GLORY' OCTOBER GLORY RED MAPLE	2" CAL MIN.
	MAG GRA	5	MAGNOLIA GRANDIFLORA SOUTHERN MAGNOLIA	2" CAL
	LO	17	QUERCUS VIRGINIANA SOUTHERN LIVE OAK	2.5" CAL
PALM TREES	CODE	QTY	BOTANICAL / COMMON NAME	SIZE
	WP	1	TRACHYCARPUS FORTUNEI WINDMILL PALM	30 GAL
SMALL EVERGREEN TREES	CODE	QTY	BOTANICAL / COMMON NAME	SIZE
	LG8	3	MAGNOLIA G. 'LITTLE GEM' DWARF SOUTHERN MAGNOLIA	8" H
SHRUBS	CODE	QTY	BOTANICAL / COMMON NAME	CONTAINER
	ABE EDW	40	ABELIA X GRANDIFLORA 'EDWARD GOUCHER' GLOSSY ABELIA	3 GAL
	AZA	64	AZALEA 'RED RUFFLES' RED RUFFLES AZALEA	3 GAL
	APT	49	AZALEA I. 'GEORGE L. TABOR' PURPLE TABOR AZALEA	7 GAL
	AZA FOR	65	AZALEA INDICA 'FORMOSA' FORMOSA AZALEA	7 GAL
	BUDB	22	BUDDLEIA X LO & BEHOLD 'BLUE CHIP JR' DWARF BLUE CHIP BUTTERFLY BUSH	3 GAL
	BUX	89	BUXUS M. 'WINTERGREEN' WINTERGREEN BOXWOOD	7 GAL
	CYC REV	2	CYCAS REVOLUTA SAGO PALM	7 GAL
	DIS BLU	31	DISTYLIUM X 'BLUE CASCADE' BLUE CASCADE DISTYLIUM	3 GAL
	ILE SKY	2	ILEX CRENATA 'SKY PENCIL' SKY PENCIL JAPANESE HOLLY	7 GAL - 36" H
	DYH	100	ILEX VOMITORIA 'NANA' DWARF YAUPON	3 GAL - 12" X 12"
	LIG	33	LIGUSTRUM JAPONICUM 'EAST BAY' EAST BAY PRIVET	7 GAL
	DAR	111	LOROPETALUM C. 'DARUMA' DARUMA LOROPETALUM	3 GAL
	LOR MON	13	LOROPETALUM CHINENSE 'MONRAZ' TM RAZZLEBERRY FRINGE FLOWER	7 GAL
	WM4	14	MYRICA CERIFERA WAX MYRTLE	4" H
	NAN POW	58	NANDINA DOMESTICA 'FIREPOWER' FIREPOWER HEAVENLY BAMBOO	3 GAL
	PIE PUR	84	PIERIS JAPONICA 'PURITY' PURITY JAPANESE PIERIS	7 GAL - 18" H.
	POD	10	PODOCARPUS M. MAKI SHRUBBY YEW PODOCARPUS	4" HT
	TER GYM	40	TERNSTROEMIA GYMNANTHERA JAPANESE TERNSTROEMIA	7 GAL
	THU JAG	8	THUJA OCCIDENTALIS 'JANED GOLD' TM HIGHLIGHTS ARBORVITAE	15 GAL
ORNAMENTAL GRASSES	CODE	QTY	BOTANICAL / COMMON NAME	CONTAINER
	GRA	2	MISCANTHUS S. 'GRACILLIMUS' MAIDEN GRASS	3 GAL
	PM	82	MUHLENBERGIA CAPILLARIS PINK MUHLY	3 GAL
	NAS TEN	175	NASSELLA TENUISSIMA TEXAS NEEDLE GRASS	1 GAL
	CTR	174	ANNUAL COLOR (BY OWNER)	1 GAL
	LIR SPI	684	LIRIOPE SPICATA 'SILVER DRAGON' CREEPING LILY TURF	1 GAL
GROUND COVERS	CODE	QTY	BOTANICAL / COMMON NAME	CONT
	SOD/SEED	CD	CYNODON DACTYLON X TRANSVAALENSIS 'DT-1' TM TIFTUF BERMUDAGRASS	SOD
		6,540 SF		

FINAL DESIGN - RELEASED FOR CONSTRUCTION

REVISIONS:
REV. 1 UPDATED LANDSCAPING

CLIENT INFORMATION:
EVOLVE COMPANIES
2918-A MARTINSVILLE ROAD
GREENSBORO, NC 27408

PARAMOUNT ENGINEERING
122 Cinema Drive
Wilmington, North Carolina 28403
(910) 791-6707 (O) (910) 791-6760 (F)
NC License #: C-2846

LANDSCAPE PLAN
OLEANDER COMMONS
WILMINGTON
NORTH CAROLINA

PROJECT STATUS:
CONCEPTUAL LAYOUT:
PRELIMINARY LAYOUT:
RELEASED FOR CONST.

DRAWING INFORMATION:
DATE: 01/12/22
DRAWN: J.M.
DESIGNED: J.M.
CHECKED: J.M.

SCALE: 1"=20'

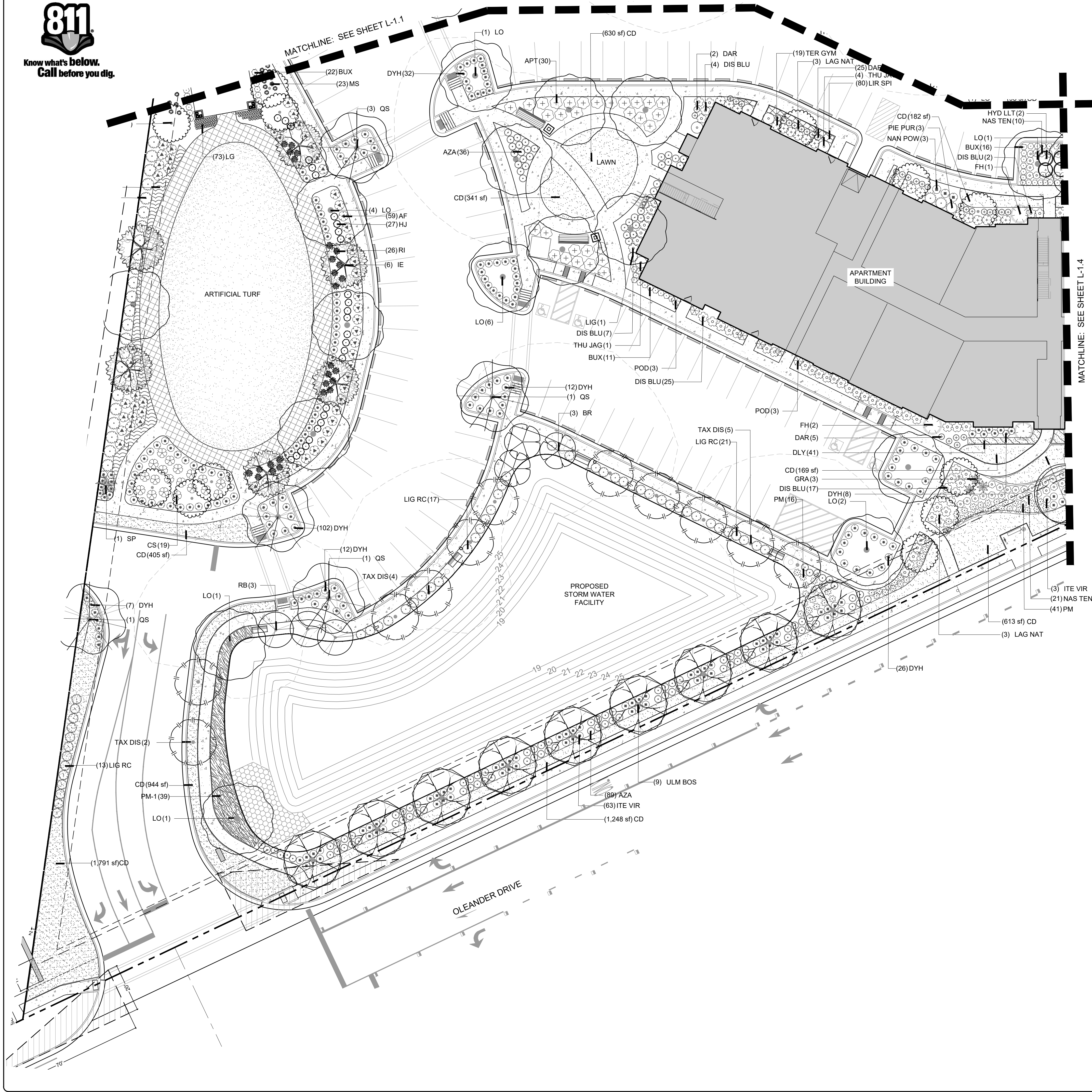
SEAL: NORTH CAROLINA ENGINEER 1449 JAMES R. CREWLO

L-1.2

PEI JOB#: 18444.PE



Know what's below.
Call before you dig.

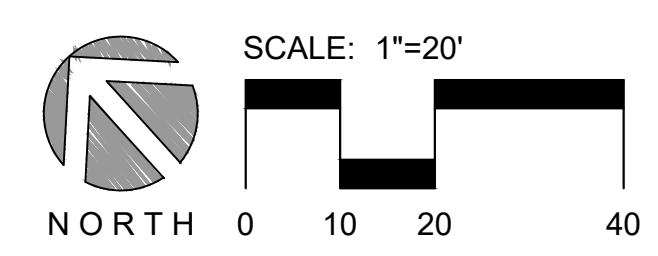


PLANT SCHEDULE L-2.3				
TREES	CODE	QTY	BOTANICAL / COMMON NAME	SIZE
	BR	3	BETULA NIGRA RIVER BIRCH	5' H
UNDERSTORY TREES	CODE	QTY	BOTANICAL / COMMON NAME	SIZE
	RB	3	CERCIS CANADENSIS 'FOREST PANSY' TM FOREST PANSY REDBUD	7-8' H
	HYD LLT	2	HYDRANGEA PANICULATA 'LIMELIGHT' (TREE-FORM) LIMELIGHT HYDRANGEA	4 HT
CANOPY TREES	CODE	QTY	BOTANICAL / COMMON NAME	SIZE
	LAG NAT	12	LAGERSTROEMIA X 'NATCHEZ' GRAPE MYRTLE	7-8' H
	IE	6	ILEX X ATTENUATA 'EAST PALATKA' EAST PALATKA HOLLY	8' H
	QS	5	QUERCUS SHUMARDII SHUMARD OAK	10' - 12' H
	LO	16	QUERCUS VIRGINIANA SOUTHERN LIVE OAK	2.5' CAL
	TAX DIS	11	TAXODIUM DISTICHUM BALD CYPRESS	2" CAL
	ULM BOS	9	ULMUS PARVIFOLIA 'BOSQUE' BOSQUE ELM	10' - 12' H
PALM TREES	CODE	QTY	BOTANICAL / COMMON NAME	SIZE
	SP	1	SABAL PALMETTO BOOED AND WOOD BRACED	10' H
SMALL EVERGREEN TREES	CODE	QTY	BOTANICAL / COMMON NAME	SIZE
	FH	3	ILEX X ATTENUATA 'FOSTERI' FOSTER'S HOLLY	8' HT.
SHRUBS	CODE	QTY	BOTANICAL / COMMON NAME	CONTAINER
	AZA	125	AZALEA 'RED RUFFLES' RED RUFFLES AZALEA	3 GAL
	APT	30	AZALEA I. 'GEORGE L. TABOR' PURPLE TABOR AZALEA	7 GAL
	AF	59	AZALEA INDICA 'FORMOSA' FORMOSA AZALEA	7 GAL
	BUX	35	BUXUS M. 'WINTERGREEN' WINTERGREEN BOXWOOD	7 GAL
	CS	19	CAMELLIA HIEMALIS 'SHISHIGASHIRA' SHISHIGASHIRA CAMELLIA	24"X24" MIN.
	DIS BLU	55	DISTYLUM X 'BLUE CASCADE' BLUE CASCADE DISTYLUM	3 GAL
	HJ	27	HYDRANGEA PANICULATA 'JANE' TM LITTLE LIME PANICLE HYDRANGEA	3 GAL
	DYH	186	ILEX VOMITORIA 'NANA' DWARF YAUPOIN	3 GAL - 12" X 12"
	ITE VIR	66	ITEA VIRGINICA 'SPRICH' TM LITTLE HENRY VIRGINIA SWEETSPIRE	7 GAL
	LIG RC	75	LIGUSTRUM J. 'RECURVIFOLIUM' WAX LEAF LIGUSTRUM	7 GAL
	LIG	1	LIGUSTRUM JAPONICUM 'EAST BAY' EAST BAY PRIVET	7 GAL
	LG	73	LIRIOPE GIGANTEA GIANT LIRIOPE	4"
	DAR	32	LOROPETALUM C. 'DARUMA' DARUMA LOROPETALUM	3 GAL
	MS	8	MISCANTHUS SINENSIS 'ADAGIO' ADAGIO EULALIA GRASS	12-18"
	NAN POW	3	NANDINA DOMESTICA 'FIREPOWER' FIREPOWER HEAVENLY BAMBOO	3 GAL
	PIE PUR	3	PIERIS JAPONICA 'PURITY' PURITY JAPANESE PIERIS	7 GAL - 18" H.
	POD	6	PODOCARPUS M. MANI SHRUBBY YEW PODOCARPUS	4' HT
	RI	26	ROSA X 'MEUJOCOS' TM PINK DRIFT GROUNDCOVER ROSE	24"X24" MIN.
	TER GYM	19	TERNSTROEMIA GYMNANTHERA JAPANESE TERNSTROEMIA	7 GAL
	THU JAG	5	THUJA OCCIDENTALIS 'JANED GOLD' TM HIGHLIGHTS ARBORVITAE	15 GAL
ORNAMENTAL GRASSES	CODE	QTY	BOTANICAL / COMMON NAME	CONTAINER
	GRA	3	MISCANTHUS S. 'GRACILLIMUS' MAIDEN GRASS	3 GAL
	PM	57	MUHLENBERGIA CAPILLARIS PINK MUHLY	3 GAL
	NAS TEN	31	NASSELLA TENUISSIMA TEXAS NEEDLE GRASS	1 GAL
GROUND COVERS	CODE	QTY	BOTANICAL / COMMON NAME	CONT
	DLY	41	HEMEROCALLIS X 'HAPPY RETURNS' DAYLILY	1 GAL
	LIR SPI	80	LIRIOPE SPICATA 'SILVER DRAGON' CREEPING LILY TURF	1 GAL
	AJ	202	TRACHELOSPERMUM A. 'ASIATIC' ASIATIC JASMINE	1 GAL
GRASS MASSINGS	CODE	QTY	BOTANICAL / COMMON NAME	CONT
	PM-1	41	MUHLENBERGIA CAPILLARIS PINK MUHLY	1 GAL
SOD/SEED	CODE	QTY	BOTANICAL / COMMON NAME	CONT
	CD	6,632 SF	CYNODON DACTYLON X TRANSVAALENSIS 'DT-1' TM TIFTUF BERMUDAGRASS	SOD

MATCHLINE: SEE SHEET L-1.4

MATCHLINE: SEE SHEET L-1.1

FINAL DESIGN - RELEASED FOR CONSTRUCTION



REV: 01.11.22
REV. 1 UPDATED LANDSCAPING

CLIENT INFORMATION:
EVOLVE COMPANIES
2918-A MARTINSVILLE ROAD
GREENSBORO, NC 27408

PARAMOUNT ENGINEERING
122 Cinema Drive
Wilmington, North Carolina 28403
(910) 791-6707 (O) (910) 791-6760 (F)
NC License #: C-2846

LANDSCAPE PLAN
OLEANDER COMMONS
WILMINGTON
NORTH CAROLINA

PROJECT STATUS:
CONCEPTUAL LAYOUT:
PRELIMINARY LAYOUT:
RELEASED FOR CONST.

DRAWING INFORMATION
DATE: 01/12/22
SCALE: 1"=20'
DESIGNED: J.C.P.
DRAWN: J.C.P.
CHECKED: J.C.P.

SEALED
NORTH CAROLINA
1449
01/12/22
JAMES R. CIRELLO
PEI JOB#: 18444.PE

